



2025 Annual Report

A MESSAGE FROM THE DEAN



It is a privilege to share the progress of the University of Missouri College of Veterinary Medicine in 2025. This report reflects more than activity. It reflects a college that is focused, growing and delivering meaningful impact for Missouri and beyond.

At Mizzou, we are intentionally bringing education, research, clinical service and diagnostics closer together. Through Pathobiology and Integrative Biomedical Sciences (PIBS), we are

advancing both fundamental discovery and translational research, connecting work at the bench to real-world impact in patient care, disease detection and public health. The Veterinary Health Center and the Veterinary Medical Diagnostic Laboratory are central to that work, serving not only as critical resources for the state, but as environments where learning, discovery and patient care happen side by side.

We are also sharpening how we operate as an organization. By focusing our people, programs and resources on shared priorities, we are building a more connected and responsive college. That alignment is improving the student experience, supporting faculty and staff and positioning us to meet the increasing complexity and demand within the veterinary profession.

None of this progress happens without the people who make it possible. Faculty, staff, students, alumni and partners show up every day with a commitment to excellence, collaboration and service. Their work is the foundation of everything highlighted in this report.

The momentum we are building is clear. Mizzou is strengthening the veterinary workforce, expanding access to advanced care and driving discovery that improves animal and human health. As the needs of our state and profession continue to evolve, we are not simply responding. We are helping define what comes next.

Srinand Sreevatsan
Dean, Mizzou College of Veterinary Medicine



TABLE OF CONTENTS

FOLLOW US

- [MizzouVetMed](#)
- [MizzouVetMed](#)
- [MizzouVetMed](#)

The Mizzou College of Veterinary Medicine is fully accredited by the American Veterinary Medical Association Council on Education, a distinction that affirms the college meets the highest standards in veterinary education. Accreditation is reviewed annually, with a comprehensive evaluation every seven years. The college's next scheduled review is scheduled for 2027.

04

Developing Leaders

18

Connecting Knowledge to Communities

08

Delivering Compassionate Care

20

Powering Progress

14

Driving Discovery

23

What Comes Next

PREPARED TO LEAD FROM DAY ONE

Mizzou students don't wait to apply what they've learned. Through early clinical exposure and two full years in rotations, they build the confidence, clinical judgment and efficiency required in practice.

Along the way, they train across species, disciplines and clinical settings, developing the adaptability needed for a rapidly evolving profession. The result is graduates who are prepared to step into practice with the versatility, confidence and skill to contribute from day one.



96.4% NAVLE PASS RATE

For the Class of 2025, this result is more than 7% above the national average (89%) and improves on last year's 93%, reflecting both the caliber of our students and the strength of Mizzou's hands-on training model. It signals strong clinical judgment across a range of scenarios.

BROAD, COMPETENCY-BASED CLINICAL TRAINING

Students build clinical competency across species through a curriculum designed to develop and assess skills over time. From foundational sciences to clinical rotations, training ensures graduates can approach a wide range of cases with consistency and depth.



READY FOR MODERN PRACTICE

Training extends beyond clinical care to include communication, ethical decision-making and the business of veterinary medicine. Graduates enter the profession equipped to navigate client interactions, team dynamics and the broader responsibilities of practice.



CARE. TRAIN. HEAL. REPEAT

The Shelter Medicine Program gives students hands-on clinical experience while expanding access to care for communities across mid-Missouri.

Every DVM student completes a Shelter Medicine rotation, working in real clinical settings that serve shelters and communities across mid-Missouri. Students help spay and neuter more than 300 animals each month, while also providing medical and dental care, vaccinations and disease prevention.

These high-volume, hands-on experiences build speed, confidence and clinical judgment early. Working alongside faculty and veterinary technicians, students learn to make decisions, manage caseloads and adapt in fast-paced environments where both efficiency and compassion matter.

By the time they graduate, students have contributed to thousands of procedures and patient interactions through Shelter Medicine. The result is graduates who are not only skilled, but prepared to step into practice with confidence, versatility and a strong sense of purpose.

A model where service and training happen at the same time, shaping both communities and the veterinarians who serve them.



WHERE THEY'RE HEADED



DELIVERING COMPASSIONATE CARE

Excellence and empathy shape the work we do every day. Through the Veterinary Health Center and Veterinary Medical Diagnostic Laboratory, our experts deliver advanced care while supporting clients and partners who rely on timely answers and thoughtful guidance.



REAL CASES. REAL PATIENTS. REAL TRAINING.

The Veterinary Health Center (VHC) is where patient care, teaching and discovery come together. As the clinical hub of the college, it supports every stage of the veterinary curriculum while delivering advanced care to animals across the region. Our world-class faculty and staff bring leading-edge expertise to mid-Missouri, ensuring patients have access to high-quality, specialized care close to home. Through our distinctive 2+2 curriculum, students spend their final two years fully immersed in clinical training, gaining earlier and deeper hands-on experience that prepares them to be day-one ready.



31,592

Total cases



17

Specialty services



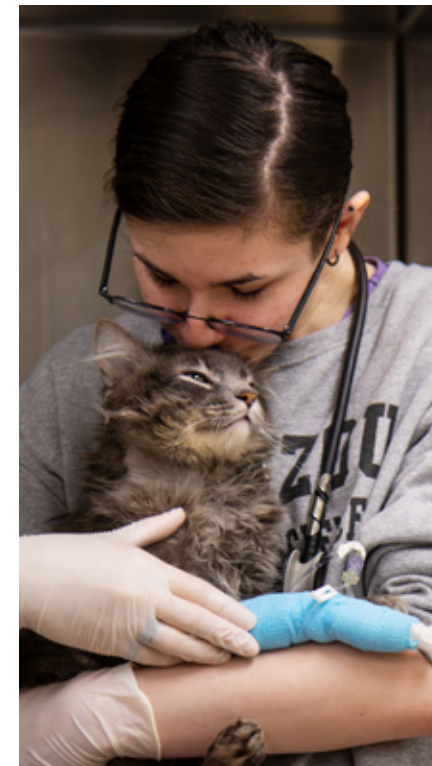
89

Missouri counties served



47

States/provinces served



FROM PRIMARY VISITS TO COMPLEX CASES

Many cases seen at the VHC begin elsewhere, referred by veterinarians seeking advanced diagnostics, specialized treatment or additional insight. The hospital also sees patients directly through Community Practice, where patients can be evaluated, treated and connected to specialty services when needed.

Care extends beyond the hospital, with teams working with large animal patients on-site and in the field, providing individual animal care and herd health services that support producers and rural communities across Missouri.

Community Practice and Shelter Medicine expand access while giving students hands-on experience in primary care, population health and high-volume settings — preparing them for the full scope of practice.

Across the hospital, board-certified specialists work alongside interns, residents and students to manage complex cases and move from diagnosis to action.

CARE THAT EXTENDS BEYOND THE HOSPITAL

At the VHC, advanced clinical services and a broad range of specialties come together in one place. From minimally invasive procedures to complex surgical interventions, teams are prepared to take on challenging conditions with precision.

Advanced imaging technologies, including MRI, CT, PET and Missouri's only standing equine CT, support more accurate diagnosis while improving safety for patients. Around-the-clock emergency and intensive services, with ventilators, continuous monitoring and a dedicated biosecure unit, ensure critically ill patients receive immediate intervention and sustained support.

That support extends beyond medical treatment. An in-house social worker provides guidance and resources for clients navigating difficult diagnoses, emergencies and end-of-life decisions, reinforcing an approach that considers both patients and the people who care for them.

WHERE TRAINING MEETS REAL-WORLD DECISION MAKING

Students are part of the clinical team, working alongside faculty, residents and interns to engage in

case discussions, observe decision-making and build the judgment required to manage complex situations. Exposure to a high volume and wide range of patients, from routine visits to specialized referral cases, builds technical skill and clinical confidence. This experience strengthens their ability to adapt, think critically and communicate effectively.

COORDINATED CARE, FROM FIRST CALL TO FOLLOW-UP

Each case is managed from initial consultation through discharge, with clinical teams aligning diagnostics, treatment and communication at every step. Plans are clear, consistent and built to carry forward as patients transition home.

Students see firsthand how complex cases move across teams, services and settings, gaining a practical understanding of how veterinary medicine works in practice.



Equipped for complexity.
Powered by expertise.

At Mizzou, we offer advanced imaging technologies not widely available in veterinary medicine, expanding what's possible in diagnosis and care.

Standing equine CT — only one in Missouri and rare in the Midwest.

Cone beam CT for high-detail, targeted imaging.

Upgraded 3T MRI for advanced neurologic and soft tissue diagnostics.

Comprehensive imaging in one location, including CT, MRI, ultrasound, PET and fluoroscopy.

Linear accelerator enabling targeted radiation therapy for cancer patients.



BREAKTHROUGH CARE: CARDI'S STORY

Cardi had barely found a new home before disaster struck. The young, newly adopted quarter horse developed signs of tetanus, a fast-moving and often fatal neurologic disease. As her condition worsened, she was referred to Mizzou's Veterinary Health Center with little time to spare.

There, a multidisciplinary team moved quickly to confirm the diagnosis and begin aggressive care. But as the disease progressed, traditional treatment options were not enough. Instead of stopping there, the team pursued a new approach, delivering antitoxin directly to the central nervous system through a small, specialized tube. The technique, believed to be a first-of-its-kind use in this setting, required close coordination across equine medicine, anesthesia and critical care. It also

created a new path forward for treating a disease that too often has limited options.

In the days that followed, Cardi began to respond. The rigidity eased. She started to eat, then move, then take steps on her own. With each small gain, recovery became possible. What once felt unlikely began to feel within reach.

She went home with the second chance she had just begun. At Mizzou, that outcome isn't left to chance. It's driven by teams willing to push beyond convention, advancing care in real time to change what is possible for patients when it matters most.



READ MORE AT
[MIZZOU.US/CARDI](https://mizzou.us/Cardi)

VETERINARY MEDICAL DIAGNOSTIC LABORATORY

The Veterinary Medical Diagnostic Laboratory (VMDL) remains a vital resource for animal health, agriculture and public health. As Missouri's only full-service veterinary diagnostic laboratory, the VMDL provides timely, trusted answers that guide clinical care, support disease surveillance and protect our nation's food supply.

Backed by nationally recognized expertise and state-of-the-art testing capabilities, the VMDL serves veterinarians, animal owners, producers and researchers across more than 90 Missouri counties and 38 states and provinces. Each year, diagnostic testing at the VMDL reflects the breadth of species served and the increasing complexity of the cases entrusted to our teams.

The VMDL holds full accreditation from the American Association of Veterinary Laboratory Diagnosticians and is designated a Level 1 laboratory in the USDA National Animal Health Laboratory Network and a Tier 1 laboratory in the FDA Veterinary Laboratory Investigation and Response Network.



61,391

Total cases processed



206,281

Total tests performed



90

Missouri counties served



38

States/provinces served

TESTING BY SECTION

- Histopathology: **53,687**
- Clinical Pathology: **53,593**
- Serology: **40,709**
- Avian Pathology: **15,632**
- Anatomic Pathology: **14,966**
- Molecular Diagnostics: **12,881**
- Bacteriology and Mycology: **10,807**
- Other: **2,722**
- Chemistry and Toxicology: **1,293**

TESTING BY SPECIES

- Canine: **81,000**
- Cervid/Exotic: **30,316**
- Avian: **21,865**
- Bovine: **19,523**
- Feline: **13,794**
- Misc.: **13,544**
- Equine: **13,187**
- Porcine: **10,725**
- Caprine/Ovine: **2,327**

STRENGTHENING MISSOURI'S DIAGNOSTIC INFRASTRUCTURE

This year marked a major milestone for the VMDL with the opening of Phase I of the Dr. Dan Brown Building and the start of Phase II construction. Phase I added a new facility to the existing VMDL footprint, while Phase II involves the demolition and reconstruction of the original building, with laboratory operations continuing uninterrupted throughout the project.

Supported by a \$73 million investment, the renovation modernizes the VMDL's physical environment to support the work already underway. Once complete, the roughly 73,000-square-foot complex will include enhanced biosafety and biosecurity features, expanded diagnostic and laboratory space, and dedicated areas for teaching and research that strengthen day-to-day operations and long-term readiness.

SERVING OUR AGRICULTURAL PARTNERS AND COMMUNITIES

Across the country, veterinarians and producers rely on timely, accurate diagnostics to guide decisions that affect animal health, production systems and livelihoods. Through routine casework and disease

monitoring, the VMDL supports early identification of health concerns and helps partners respond with clarity and confidence.

New diagnostic tools and improved laboratory workflows allow teams to move cases efficiently from submission to interpretation, while modernized sample handling improves consistency across sections. Together, these improvements reinforce Missouri's diagnostic infrastructure and support reliable service for the people and industries the VMDL serves.

EDUCATION AND THE FUTURE OF VETERINARY DIAGNOSTICS

The renovation also strengthens the VMDL's role in education and professional collaboration. Purpose-built classrooms and interactive spaces support hands-on learning for students, house officers, veterinary peers and clients, connecting diagnostic science with real-world application.

As Phase II construction continues, the VMDL is positioned to expand its capabilities in step with evolving animal health needs. The completed facility will support future growth in diagnostics, research and training while preserving the laboratory's long-standing role as a trusted partner for veterinarians, producers and public health professionals.



DRIVING DISCOVERY

Research at Mizzou changes what's possible. Our faculty lead and participate in major research efforts that turn foundational science into real-world advances. This work improves animal and human lives and helps shape the future of veterinary and biomedical medicine.

RESEARCH // AT A GLANCE

Research across the college spans basic, translational and clinical sciences, with faculty working individually and in teams to address complex challenges. Projects often cross departments, disciplines and institutions, allowing discoveries to move forward with both scientific rigor and practical purpose.



\$15.1M

Research funding



\$19.8M

Research expenditures



45

Grants awarded



242

Publications authored

#5 NIH-funded

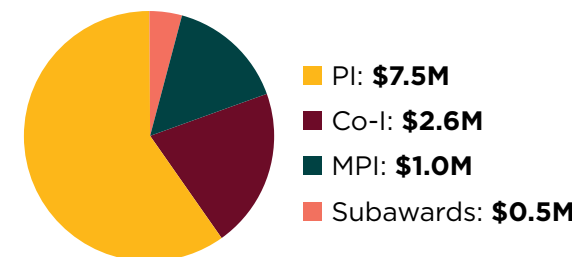
veterinary medical school in 2025 according to the Blue Ridge Institute for Medical Research

EXPENDITURES BY SPONSOR CATEGORY



- NIH: **\$14.6M**
- University: **\$1.7M**
- Other federal: **\$1.3M** (USDA, NSF, DOD, other HHS)
- Nonprofit and state/local: **\$1.3M**
- Industry: **\$1M**

EXPENDITURES BY INVESTIGATOR ROLE



ADVANCING SCIENCE, IMPROVING LIVES

Vaccine development and infectious disease prevention: Designing strategies to protect against serious bacterial infections and improve immune response.

Cross-species disease insight: Clarifying how influenza and other pathogens move between species to inform disease surveillance and prevention.

Cancer care: Refining prognostic tools and therapeutic approaches that support better outcomes for companion animals.

Targeting disease at the cellular level: Identifying new therapeutic targets by understanding how pathogens replicate within host cells.

Microbiome and chronic disease: Exploring how gut health influences cancer development and prevention.

Gene-based approaches for rare disease: Developing models and therapies that accelerate progress toward treatment.

BRINGING RESEARCH TO THE CLINIC

Clinical trials bring possibility into the moments when it matters most. Through the Veterinary Health Center, investigator-led and sponsored studies offer patients access to emerging diagnostics and treatments while advancing care across clinical specialties. This work reflects deep collaboration between clinicians and researchers, turning innovation into options for animals and owners and generating insight that reaches beyond individual cases to shape the future of medicine.



18

Clinical trials
conducted



98

Patients
enrolled



HOPE IN ACTION: SADIE'S STORY

When rescue dog Sadie was diagnosed with lymphoma, her owners, Mary and Mike Winter, were suddenly facing uncertainty and limited options. Through Mizzou's Veterinary Health Center, Sadie became one of the first dogs enrolled in a national clinical trial testing CAR T-cell therapy, an advanced treatment that directs the body's own immune cells to recognize and fight cancer.

Under the care of Mizzou clinicians and researchers, Sadie received the innovative therapy and was closely monitored using advanced imaging and specialized expertise available at only a handful of institutions nationwide. A key part of this breakthrough came through collaboration with the University of Missouri Research Reactor (MURR), the highest-power, university-operated research reactor in the United States. Tracers produced at MURR allowed

clinicians to track where the CAR T-cells moved inside Sadie's body, offering rare insight into how the treatment was working in real time.

In the weeks that followed, Sadie's lymph nodes began to shrink. Her energy returned. Over time, she achieved remission and was declared cancer-free.

For Sadie, the trial offered a future when few options remained. For veterinary medicine, it marks a meaningful step forward, helping lay the groundwork for new treatment approaches for dogs with lymphoma. It also generates insight that can inform future cancer therapies for humans.

READ MORE AT
[MIZZOU.US/SADIE](https://mizzou.us/sadie)



WHERE IDEAS BECOME IMPACT

Breakthroughs start with questions and move forward through collaboration. Across the college, faculty are exploring how disease develops, how it can be prevented and how new therapies improve outcomes for both animals and people. This work spans genetics, infectious disease, cancer and more, with insights that connect across species and disciplines.

Meet a few researchers whose efforts are advancing knowledge, shaping new approaches to care and strengthening Mizzou's role as a leader in veterinary and biomedical research.

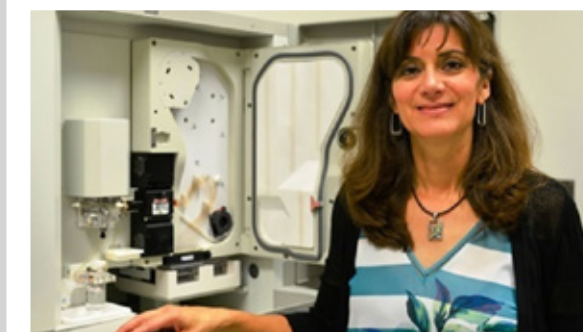
James Amos-Landgraf

Dr. Amos-Landgraf has deep expertise in developing and characterizing transgenic and knockout mouse and rat models to understand the genetic and epigenetic drivers of conditions like colorectal cancer. His work bridges molecular biology, epigenetic regulation and the gut microbiome to uncover how disease begins and progresses, advancing new pathways for early detection, prevention and treatment.



Elizabeth Bryda

Dr. Bryda specializes in comparative medicine and animal modeling, with a focus on genetic engineering and the development of advanced rodent and zebrafish models to study human disease. Her work integrates molecular genetics, genome editing and the microbiome to uncover the mechanisms driving conditions such as kidney disease, neurological disorders and cancer, advancing new pathways for targeted therapeutics and personalized medicine.



Roman Ganta

Dr. Ganta focuses on understanding and combating tick-borne diseases, with emphasis on pathogens that impact both human and animal health. His work integrates molecular and cellular biology to uncover how these bacteria survive, evolve and evade treatment, identifying new targets for vaccines and therapeutics. His research is advancing new ways to prevent and treat emerging infectious diseases.



CONNECTING KNOWLEDGE TO COMMUNITIES

Knowledge is most powerful when it's shared. Through continuing education, extension and engagement, we deliver practical expertise directly to veterinarians, producers and communities, strengthening practice and supporting industries.



OUTREACH AND ENGAGEMENT ACROSS MISSOURI

Veterinary Extension and Engagement efforts continue to connect the college's expertise with communities across the state. Faculty delivered programming focused on disease management, antimicrobial use, biosecurity and herd performance, while also responding to emerging threats affecting livestock systems. These efforts reached veterinarians, producers, industry partners and state agencies through workshops, producer meetings, publications and collaborative Extension initiatives.

At the same time, outreach efforts expanded to support workforce development and community awareness. Programming for K-12 students introduced thousands of young people to careers in veterinary medicine, while faculty partnered with Extension specialists and regulatory agencies to support emergency preparedness and response. Together, these efforts strengthen Missouri's agricultural communities and reinforce the college's role as a trusted resource across the state.

CONTINUING EDUCATION AND PROFESSIONAL DEVELOPMENT

As the state's only veterinary college, we have a responsibility to lead, train and support the veterinary profession. Through continuing education (CE) programs, we share our expertise with professional peers, delivering practical, real-world training that supports day-to-day practice and helps meet ongoing licensure requirements. These offerings ensure veterinarians and veterinary teams stay current in a rapidly evolving field.

From the Equine Horse Owner Seminar to the Small Animal Internal Medicine Short Course and dedicated veterinary technician CE offerings, these programs reach professionals across disciplines. Additional initiatives, including the Show-Me VET ECHO program and advanced training in reproduction, genomics and production medicine, expand access to case-based learning throughout the country. These efforts strengthen the veterinary workforce and reflect the college's leadership in lifelong learning.

EXTENDING THE REACH OF VETERINARY EDUCATION

Since 2021, the Show-Me VET ECHO program has brought faculty and practicing veterinarians together for more than 50 case-based, interactive sessions. Live sessions continue monthly from noon to 1:00 p.m. on the second Tuesday, creating a consistent space to learn, ask questions and work through real-world challenges.

This year, the program expanded with new on-demand courses, giving veterinarians greater flexibility to learn on their own schedule while earning continuing education credit. Together, these offerings make it easier to access practical, relevant training that supports animal health, producers and the communities they serve.

➤ **LEARN MORE AT**
MIZZOU.US/CVM-ECHO





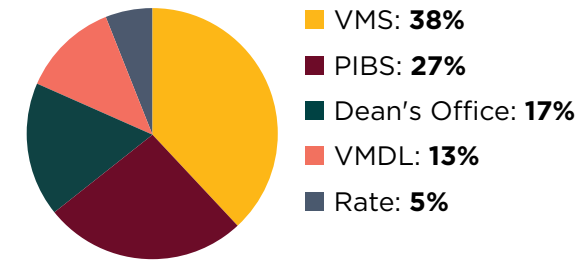
POWERING PROGRESS

Strategic investment fuels the work ahead. Through philanthropy and responsible stewardship, resources are directed where they matter most, strengthening education, research and care while positioning the college to meet future challenges with confidence.

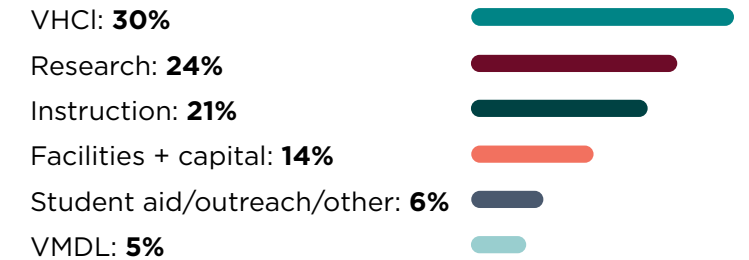
FINANCIAL OVERVIEW // SOURCES AND USES

Financial strength makes progress possible. In fiscal year 2025, the college continued to align resources with its highest priorities, investing in people, programs and infrastructure that move our mission forward. From philanthropy to sponsored funding, each revenue stream supports education, drives research and sustains high-quality clinical care.

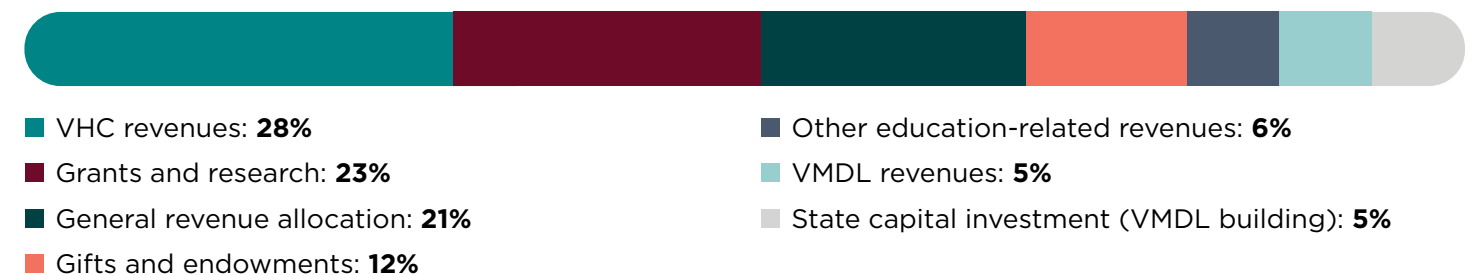
GENERAL REVENUE ALLOCATION



EXPENDITURES BY PURPOSE



REVENUE BY FUNDING SOURCE



ADVANCING THE SCHOOL

Progress doesn't happen by chance. It's built through intentional investment, from alumni who give back, partners who believe in our mission and state support that ensures the college continues to serve Missouri and the region.

This year, that collective commitment translated into real momentum. Investments in facilities, people and programs are expanding what's possible across the college, from how students are trained to how care is delivered and discoveries are made. Each contribution plays a role in moving the college forward.

State funding provides a critical foundation, supporting infrastructure and ensuring the college can meet the growing needs of animal health, agriculture and public health. At the same time, private philanthropy accelerates that impact — with donors from 44 states helping create opportunities to innovate, grow and respond to emerging challenges.

 **\$11.4M**
Total dollars raised

 **1,584**
Individual gifts

 **536**
Generous donors

INVESTING IN EXPERIENCE

Targeted facility improvements across the college are shaping a more functional and responsive environment for students, faculty and staff. Recent updates to the Dogwood Café have transformed a central gathering space, improving flow, increasing seating and introducing a Just Walk Out retail experience that allows users to quickly grab food and beverages without waiting in line.

New electronic scheduling displays outside classrooms and conference rooms provide clear, real-time visibility into space availability, helping the college better manage shared resources. Upgraded tap-based access systems are simplifying entry into buildings and instructional spaces, while new Zoom-enabled rooms in both the Veterinary Medical Building and Veterinary Health Center expand opportunities for learning, meetings and collaboration.



WHAT COMES NEXT

The progress reflected in this report isn't a finish line. It's a foundation.

In 2026, that momentum is shaping how we expand clinical care, accelerate discovery and strengthen the veterinary workforce. Across the college, we are building on what works, refining what can be better and moving forward with a clear sense of purpose.

Our focus remains where we can have the greatest impact: preparing practice-ready graduates, delivering advanced care to animals across Missouri and beyond and advancing research that improves both animal and human health. As needs continue to evolve, so does our approach, grounded in collaboration, guided by data and driven by a commitment to serve.

Looking ahead, our priorities are clear. We will continue to invest in the Veterinary Health Center and clinical training environment, ensuring students gain the depth and breadth of experience needed to lead in a rapidly changing profession. We will expand research infrastructure and partnerships that allow discoveries to move more quickly from idea to application. And we will strengthen programs that support veterinarians throughout their careers, extending Mizzou's impact far beyond our campus.

The demand for veterinary expertise continues to grow. Mizzou is not waiting to meet it. We are building the people, programs and partnerships that will define what comes next.

LOOKING FORWARD to 2026

- 
VMDL Phase II expansion continues: Advancing Missouri's diagnostic infrastructure with modernized space, greater capacity and enhanced biosecurity.
- 
Growth at the Veterinary Health Center: Broadening access to advanced clinical services while creating more applied training opportunities for students.
- 
Recruiting more world-class faculty: Targeted hiring is deepening expertise, increasing capacity and strengthening training.
- 
Enhancing the Clinical Skills Lab: Updated equipment and new technologies will elevate hands-on learning.
- 
Modernizing the Histology Lab: Expanded seating, upgraded technology and improved infrastructure will strengthen a core instructional space and meet growing class needs.